

**World Usability Day  
Aachen Local Event Nov  
10, 2011**

**Presentation Slides  
Prof. Jan Borchers  
RWTH Aachen University**



World Usability Day

6



P3

communications



1:15 Keynote: Bruce Tognazzini, NN/g

2:15 HCI Center & Blue Dot Award

3:00 HCI Center Expo & Networking

5:00 Done!









*Eva Jakobs*



*Martina Ziefle*



Peter Russell



Markus Jordans



1.5M €

Handicraft



**Order #** 99004234 **Quote** 0  
**Ship To** Hi Fo Holdings, Ltd. **City** HFO  
**Address** 1125 STREET SUITE 1200  
**City** VANCOUVER **BC** V6Z2K8  
**Phone** [Redacted] **Fax** [Redacted]  
**Appointment D:** 06-18-02

---

**Ship From** CANADIAN HARDWARE & H  
**Address** AVENUE SUITE 101  
**City** SCARBOROUGH **ON** M1B5M4  
**Phone** [Redacted] **Fax** (416) [Redacted]

---

**Mode** From SC To SC  
**Carrier** ADT  
**Tariff** CARR-00-01  
**Service** 20  
**From** YVR  
**To** YYZ  
**Deliver By** 06-12-02 17:00  
**Clock Stop**

**Charges** 761.50  
**Discount** 0%  
**SubTotal** 761.50  
**Accessorial** 40.00  
**DV** 0 0.00  
**FSC: CAX** 2.50% 38.00  
**Total** 839.58  
**Balance** 839.58

---

**MasterID** 0  
**MAWB**   
**Statement** 0  
**Hold P/L**   
**Non Freight**   
**Mandate Hold**   
**Print Hold**  **Rate**

**Broker** Value 0.00 **Unit**   
**Modified**   
**Verbal Prod**   
**Verify on POB**   
**Harmon**

**SAVED**

**Charges** 761.50  
**Discount** 0%  
**SubTotal** 761.50  
**Accessorial** 40.00  
**DV** 0 0.00  
**FSC: CAX** 2.50% 38.00  
**Total** 839.58  
**Balance** 839.58

**Addend**   
**Closed**   
**Print**

Units	Type	Description	Stated	ASWT	Dimensions	Wt	Rate	Charge
1	CRATE	CRATE	91	94	25x25x30	97	50.00	40.50
1	2MAN	2 MAN P&D					40.00	40.00
2	CRATE	CRATE	500		50x48x48	1,426	50.00	713.00
0							0.00	0.00



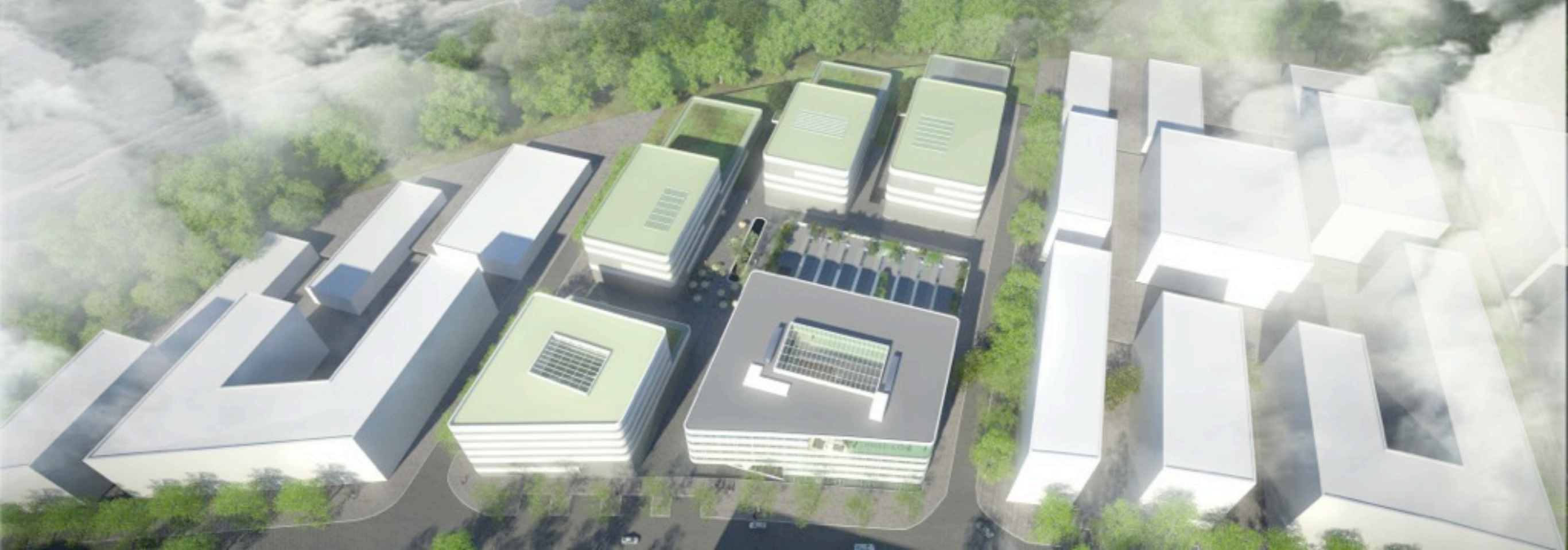
**Design**



**Analyze**

**Implement**

Research  
Development  
Consulting  
Teaching





36 m bis Runderde

39,60 m bis vor Ende Einheit

29,16qm-Büro  
5,40 x 5,40  
Professorin  
Ziefle

19,44qm-Büro  
5,40 x 3,60  
HCIC  
Ziefle

19,44qm-Büro  
5,40 x 3,60  
HCIC  
Borchers

19,44qm-Büro  
5,40 x 3,60  
HCIC  
Borchers

19,44qm-Büro  
5,40 x 3,60  
HCIC  
Russell

19,44qm-Büro  
5,40 x 3,60  
HCIC  
Russell

19,44qm-Büro  
5,40 x 3,60  
HCIC  
P3

19,44qm-Büro  
5,40 x 3,60  
HCIC  
Jakobs

19,44qm-Büro  
5,40 x 3,60  
HCIC  
Jakobs

29,16qm-Büro  
5,40 x 5,40  
Professorin  
Jakobs

19,44qm-Büro  
5,40 x 3,60  
Sekretariat Zie.

19,44qm-Büro  
5,40 x 3,60  
2 WM Ziefle

19,44qm-Büro  
5,40 x 3,60  
2 WM Ziefle

19,44qm-Büro  
5,40 x 3,60  
2 WM Ziefle

19,44qm-Büro  
5,40 x 3,60  
2 WM Ziefle

19,44qm-Büro  
5,40 x 3,60  
2 WM Ziefle

19,44qm-Büro  
5,40 x 3,60  
2 WM Ziefle

19,44qm-Büro  
5,40 x 3,60  
2 WM Ziefle

19,44qm-Büro  
5,40 x 3,60  
2 WM Ziefle

29,16qm  
5,40 x 5,40  
alle  
Küche

12,15 qm  
Toiletten  
4,50 x 2,70

Empfang alle

29,16qm-Büro  
5,40 x 5,40  
alle  
Media Space

Open Space Ziefle

38,88qm  
7,20 x 5,40  
Lab

HCIC

77,76qm  
10,80 x 7,20  
Open Project Space  
HCIC  
Hiwis, etc.

Teeküche  
alle

Archiv  
Jakobs

29,16 qm  
Treppen und  
Toiletten  
5,40 x 5,40

25,92qm  
3,60 x  
7,20  
3 WM  
Jakobs

12,96qm  
3,60 x  
3,60  
Skr.

16,20qm  
4,50 x 3,60  
2 WM

19,44qm  
5,40 x 3,60  
2 WM

17,01qm-Büro  
6,30 x 2,70  
2 WM Jakobs

24,30qm-Büro  
7,20 x 2,70  
2 WM Jakobs

Eva

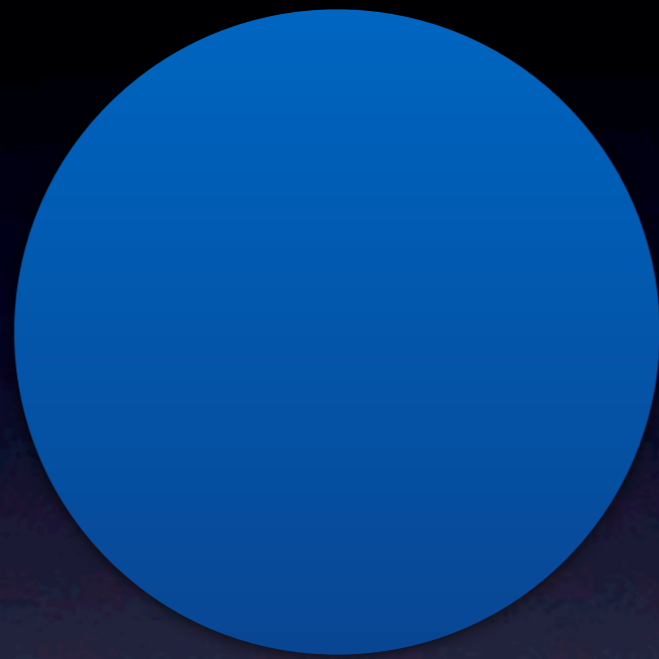
Martina

Atrium

Raumbedarf HCI-Center im CAMPUS-Cluster Logistik  
Datei: 110309 HCIC Floor Sketch.graffle  
Autor: Jan Borchers  
Maßstab: 1 Rastereinheit = 90 cm  
Letzte Änderung: Wed Mar 09 2011 von Jan Borchers

Abschluss des finanzierten Platzes

€



Blue Dot Award

*Enjoy the Expo!*  
*(...and the beer...)*

*[hcic.rwth-aachen.de](http://hcic.rwth-aachen.de)*